



Dataplate is now available in both 32-bit and 64-bit versions. We recommend using the 64-bit edition, as performance on a 64-bit Windows operating system can be up to four times faster.

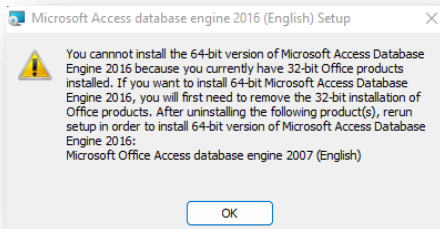
The installation and configuration steps described below require Windows administrator rights or assistance from your IT representative.

1. Requirements for Running Dataplate X64

To run Dataplate 64-bit (DataplateX64), the **Access Database Engine 64-bit (ADE64)** must be installed. Please note: ADE64 can only be installed if **Microsoft 365 (Office) is 64-bit**.

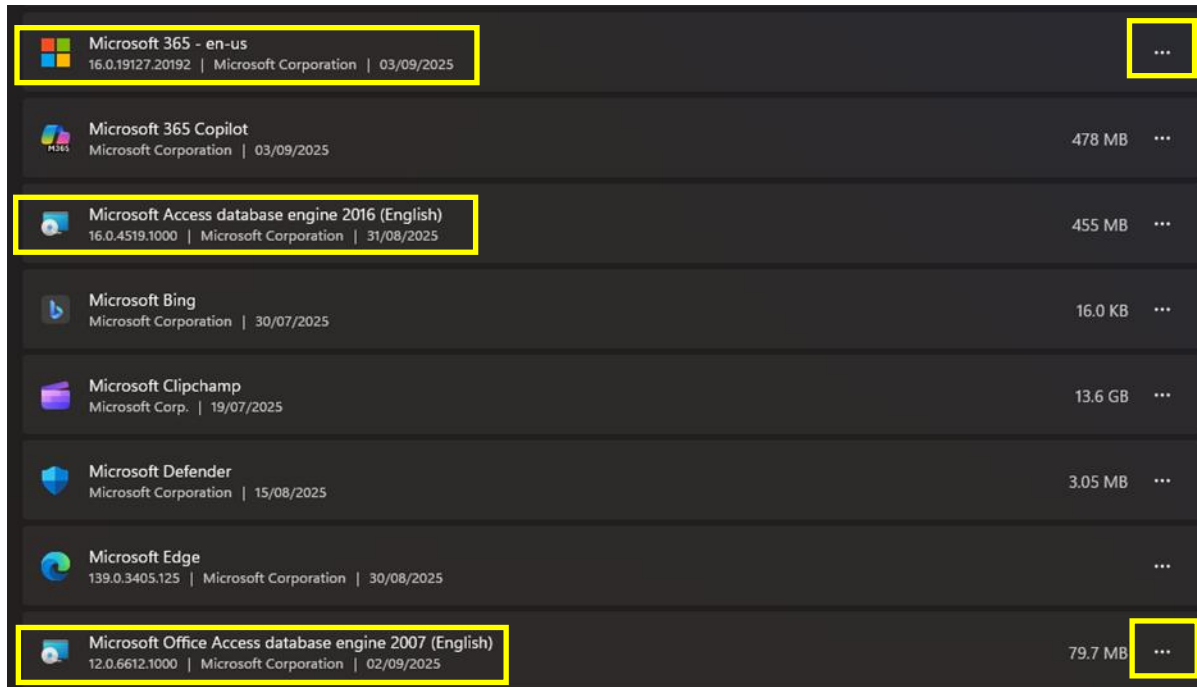
Any existing 32-bit ADE must be uninstalled first.

Dataplate displays the installed Office version and architecture in the footer (e.g., **MSO16-64**). In this example, “16” is the version, and “64” indicates the 64-bit architecture.



2. Uninstalling 32-bit ADE

- Open **Windows Settings > Apps > Installed Apps**.
- Locate **Microsoft Office Access database engine 2007 (English)**.
- Click the three dots menu and select **Uninstall**.



3. Installing ADE64

Once the 32-bit ADE has been removed:

- Install **Microsoft Office Access Database Engine 2016 (64-bit)**.
- After installation, it is recommended to reinstall the **32-bit ADE**, as it is still required for running **Business Objects reports**.

Both ADE versions should be present in the Dataplate program folder (typically C:\Program Files\DataplateX) as:

- ade.exe (32-bit)
- ade64.exe (64-bit)



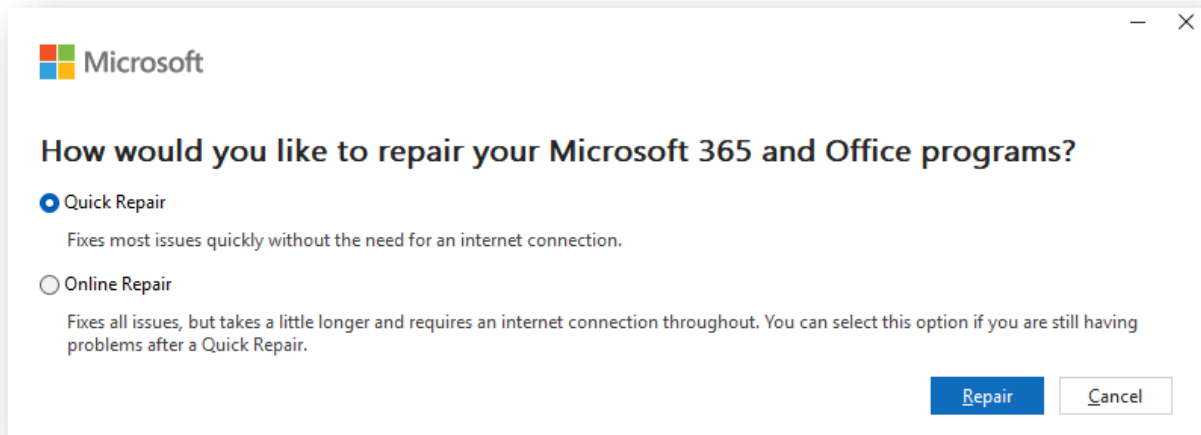
Both files are available for download from the Dataplate Support webpage:

(https://www.dataplate.co.uk/dataplatex_support.html)

4. Reconfiguring ADE for Best Performance

To ensure correct references and configuration:

- Run a **Quick Repair** of Microsoft 365 (or Office).
- Go to **Installed Apps**, click the three dots on **Microsoft 365**, select **Modify**, then choose **Quick Repair**.



5. Running Dataplate X64

After completing the above steps:

- Launch DataplateX64.exe from the Dataplate program folder.
- Confirm the footer information shows the build number, date, and **(64-bit) ACE32/64**.
- From the **Tools** menu, select **System Performance Test**.
- Performance results should show **3–4 times faster processing** compared to Dataplate 32-bit.